

40TH ANNIVERSARY EDITION



***In-Bed Auxiliary Tanks
Refueling Tanks
Fuel Tank & Tool Box Combos
Replacement Tanks***



Contents

- 1 Ordering & Warranty
- 2 TRAX 4™ Operating System
- 3 In-Bed Auxiliary Fuel Tanks
- 7 Auxiliary Tank & Tool Boxes
- 9 Refueling Tank Systems
- 13 Diesel Refueling Tanks
- 15 Refueling Tank & Tool Boxes
- 17 Pickup, Van, Cab Chassis Replacement Tanks
- 18 Ford Cab Chassis & Van Replacement Tanks
- 19 Toyota Tundra Replacement Tank
- 20 Ram Cab Chassis Replacement Tanks
- 21 Fuel System Regulations

More fuel is as easy as 1-2-3.

Ordering is simple! We have a number of ways for you to place individual or volume orders:



Phone Orders

(530) 893-5209 / (800) 442-0056

Give our fuel system experts a call to place your order or learn more about fitment and product details.



Order Online

www.TransferFlow.com

Visit our website to browse our fuel tank products, to place an order, and to learn more about Transfer Flow.



Find an installer near you!

www.TransferFlow.com/installation

Transfer Flow has built an extensive network of over 200 authorized installers throughout North America. Installation rates may vary.



Celebrating 40 years of fueling adventures!

Since 1983, Transfer Flow has remained committed to supporting you, our community, and our country by designing and manufacturing “Made in the USA” fuel systems and accessories.

It is because of customers like you who share our philosophy and commitment to “Made in USA” products and superior customer service that we welcome and celebrate 40 years of success!

Thank you, and enjoy your premier fuel system, designed and engineered for excellence. We’re looking forward to fueling your adventures!

Lisa Johnson

Lisa Johnson,
CEO

Transfer Flow fuel tanks come with a 6-year warranty.

Transfer Flow fuel systems are covered by a six year, unlimited mile warranty* against defects in material and workmanship throughout the U.S. and Canada from the unit purchase date by the original purchaser for the original vehicle the unit was installed in.

For specific information regarding part exceptions, exclusions and limitations, warranty claim procedures, and federal regulatory provisions, please see our full warranty details on our website at **TransferFlow.com/warranty**.

* Part numbers 070-TK-34310 and 070-TK-34311 come with a one year, unlimited mile warranty.



With Transfer Flow's TRAX 4™ mobile app, you'll know how much on-board fuel you have!

TRAX 4™ is a computer-controlled fuel management system that transfers fuel from a Transfer Flow auxiliary fuel tank to your pickup's main fuel tank. It comes with all Transfer Flow auxiliary fuel tanks.

Based on the capacity of your pickup's main fuel tank and the capacity of the Transfer Flow auxiliary fuel tank, the TRAX 4™ system will transfer fuel at predetermined levels while the vehicle is in operation.

Want to know the status of your onboard fuel systems? Download the TRAX 4™ mobile app to your smartphone and enter your vehicle and fuel system information. You'll be able to monitor your pickup's fuel capacity in no time! During fuel transfer, the message "PUMP ON" will be displayed on your smartphone. You also have the option of displaying either the gallons or the percentage of fuel in each tank.

Know how many miles to go until empty






Shows operating status, including when fuel is being transferred

Fuel levels shown in each tank

Gallons or the percentage of fuel shown in each fuel tank



TRAX 4™ Status Guide

	The vehicle's fuel systems are functioning properly.		Fuel transfer from the auxiliary tank to the main tank is occurring.		There is an error with the vehicle's fuel systems. See TRAX 4™ manual.		Blue tooth connection has been lost.		Vehicle engine is off. Start engine to access data.
--	--	---	--	---	--	--	--------------------------------------	---	---

Monitor the fuel level of your auxiliary fuel tank with an in-cab display.

If you prefer not to use our TRAX 4™ app with your auxiliary tank but still want to know how much fuel is in the tank, consider our in-cab fuel level monitor LCD. The LCD shows the fuel level of the auxiliary tank with an easy-to-read bar graph that decreases when fuel is transferred to the pickup's main fuel tank. This item is sold separately.



Fuel Level Monitor LCD (shown actual size)
Part No. 040-01-17100

Gravity-fed systems are unsafe and unlawful.

Due to safety, environmental, and legal concerns, Transfer Flow does not endorse, design, install, or sell gravity-fed fuel systems because of their inherent risks. With gravity-fed systems, if the valve, connectors, or fuel line malfunctions (or you forget to close the valve), there's nothing to prevent over-filling the fuel tank and causing dangerous fuel spills. By installing a gravity-fed system, you are disabling the safety features of your vehicle's fuel system. Transfer Flow fuel tanks are never to be used in conjunction with gravity-fed systems.



50-Gallon In-bed Auxiliary Fuel Tank

Worry-free long hauls are yours with extra onboard fuel.

Transfer Flow in-bed auxiliary fuel tanks provide a worry-free, no-hassle experience with our patented TRAX 4™ computer-controlled fuel management system.



Each of our auxiliary fuel tanks come with our TRAX 4™ system and mobile app that shows fuel levels in percentages or gallons, as well as the operational status of the system.

Our technology is specific for each vehicle and auxiliary tank model, and automatically transfers fuel from the in-bed tank to the main tank at specified fuel levels.

Our in-bed auxiliary fuel tanks are available in 40-, 50-, 75-, and 100-gallons. Each fuel tank comes with our TRAX 4™ operating system and mobile app that shows fuel levels in percentages or gallons and the system's operational status.

FEATURES & BENEFITS

- Robot-welded seams provide extraordinary strength
- Comes complete with all components for installation
- TRAX 4™ computer-controlled automatic fuel transfers for worry-free operation
- Built from 12- and 14-gauge U.S. aluminized steel for superior durability and strength
- Baffled to prevent fuel sloshing
- 6-year, unlimited mile warranty



NOTES

- ✦ 2010—12 Ram Mega Cab and Crew Cab short bed pickup with single rear wheels require a filler neck (part no. 050-01-15461).
- ✦ 2013—23 Ram Mega Cab and Crew Cab short bed pickups require a Mounting Bracket Kit (part no. 020-01-16790).
- ✦ Does not fit on 2013—23 Ram short bed with 5th Wheel Prep Package.
- ✦ Does not fit on 2020—23 Ram short bed pickup.

OPTIONAL UPGRADES & ACCESSORIES



TRAX 4™ Fuel Level Monitor
040-01-17100



Killem® Biocide
070-CH-33291



Locking Fuel Cap
070-GC-33572



Tie Down Brackets
020-01-16384



Scosche® Magnetic LCD/phone Mount
070-BR-34422

- Fits under most tonneau covers
- Works with 5th wheel prep packages



40
GALLON
Diesel

SHORT AND LONG BED

Fits: 2008—23 Ford, 2010—23 GM/Chevy, and 2010—23 Dodge/Ram

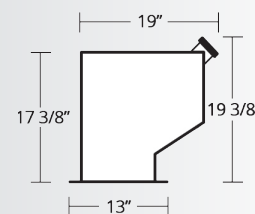
Fuel: Diesel

Ship Weight: 132 lb.

Dimensions: 48" L x 19" W x 19 3/8" H

Part Number: 080-01-16637

Notes: ✖ ☆



- Fits under most tonneau covers

50
GALLON
Diesel

SHORT AND LONG BED

Fits: 2008—23 Ford, 2010—23 GM/Chevy, and 2010—23 Dodge/Ram

Fuel: Diesel

Ship Weight: 155 lb.

Dimensions: 60 3/4" L x 18 1/2" W x 18" H

Part Number: 080-01-16625

Notes: ✖ +



75
GALLON
Diesel

**SHORT AND
LONG BED**

Fits: 2008—23 Ford, 2010—23 GM/Chevy, and 2010—23 Dodge/Ram

Fuel: Diesel

Ship Weight: 182 lb.

Dimensions: 60 3/4" L x 21" W x 22 1/2" H

Part Number: 080-01-16755

Notes: ✖ + ❖



100
GALLON
Diesel

**LONG BEDS &
2017+ GM SHORT BED**

Fits: 2008—23 Ford, 2010—23 GM/Chevy, and 2010—23 Dodge/Ram

Fuel: Diesel

Ship Weight: 264 lb.

Dimensions: 60 3/4" L x 27 1/4" W x 22 3/8" H

Part Number: 080-01-16758

Notes: ✖ +



100-Gallon In-bed Auxiliary Fuel Tank

// Great company and product! Transfer Flow came highly recommended and did not disappoint. I highly recommend this "American-made" company and their product line. //



by BILL C.



// I'm so happy that I purchased and installed a Transfer Flow fuel tank. Prior, I was only getting 300 miles per fill-up. Now with the tank, I'm able to get well over 1,500 miles on a fill-up. Having this tank saves me so much time when I'm on the road. //



by MARK E.





40-Gallon Fuel Tank and Tool Box Combo

Enjoy the best of both worlds with extra fuel *and* extra storage.

The all-in-one auxiliary fuel tank and tool box combos are computer-controlled by our TRAX 4™ operating system for worry-free fuel transfers.



Each of our auxiliary fuel tanks come with our TRAX 4™ system and mobile app that shows fuel levels in percentages or gallons, as well as the operational status of the system.

Easily load your tools, supplies, and equipment in the locking storage compartment to keep them safe and secure.

The 40-gallon fuel tank and tool box combo sits nearly flush with most pickup truck bed rails, while the versatile 70-gallon model sits on the bed rails and adjusts to the depth of the pickup bed.

You can also add refueling capabilities to your Transfer Flow auxiliary fuel tank and tool box combo with the addition of our Refueling Kit!

FEATURES & BENEFITS

- TRAX 4™ computer-controlled automatic fuel transfers for worry-free operation
- Comes complete with all components for installation
- Built from 12- and 14-gauge U.S. aluminized steel for superior durability and strength
- Gas-filled shocks for easy opening and closing
- Locking handles to keep gear secure
- Baffled to prevent fuel sloshing
- 6-year, unlimited mile warranty



NOTES

- ✖ 2010—12 Ram Mega Cab and Crew Cab short bed pickup with single rear wheels require a filler neck (part no. 050-01-15461).
- ✚ Does not fit on 2013—23 Ram short bed with 5th Wheel Prep Package.
- ❖ Does not fit on 2020—23 Ram short bed pickup.

OPTIONAL UPGRADES & ACCESSORIES

			
TRAX 4™ Fuel Level Monitor 040-01-17100	Killem® Biocide 070-CH-33291	Locking Fuel Cap 070-GC-33572	Tie Down Brackets 020-01-16384
			
Refueling Kit (40 gal.) 020-01-14539	Refueling Kit (70 gal.) 020-01-16229	Scosche® Magnetic LCD/phone Mount 070-BR-34422	



40
GALLON
Diesel

**SHORT AND
LONG BED**

Fits: 2008—23 Ford, 2010—23 GM/Chevy, and 2010—23 Dodge/Ram

Fuel: Diesel

Ship Weight: 202 lb.

Outside Dimensions: 59" L × 21" W × 21 5/8" H

Inside Dimensions: 59" L × 18" W × 9 3/4" H

Storage Space: 6 cubic feet

Part Number: 080-01-16188

Notes: ✕ +



70
GALLON
Diesel

**SHORT AND
LONG BED**

Fits: 2008—23 Ford, 2010—23 GM/Chevy, and 2010—23 Dodge/Ram

Fuel: Diesel

Ship Weight: 280 lb.

Outside Dimensions: 73" L × 24 1/2" W × 23 3/4"—27 3/4" H

Inside Dimensions: 62" L × 14 1/2" W × 9 1/2"—13 1/2" H

Storage Space: 9 cubic feet

Part Number: 080-01-16063

Notes: ✕ + ✧



82-Gallon Refueling Tank System

Fuel up equipment, vehicles, and off-road toys with a legal refueling tank.

Ditch the fuel cans when you have a refueling station in your truck bed that's perfect for refueling vehicles, off-road toys, and equipment.

Transfer Flow refueling tank systems are Department of Transportation (DOT) legal to carry and transfer gasoline, diesel, ethanol, methanol, and kerosene. The easy-to-use hose purging feature pulls any remaining fuel left in the hose back into the refueling tank to eliminate fuel messes and stretch your extra fuel capacity even further. Includes GPI® fuel pump.

See page 21 for refueling tank regulation information.

OPTIONAL UPGRADES & ACCESSORIES



Husky® Fueling Swivel
070-FS-32685



Killem® Biocide
070-CH-33291



GPI® Fuel Meter
020-01-13959



Tie Down Brackets
020-01-16384



Fuel Filter Kit
020-01-13958



Locking Fuel Cap
070-GC-34074



Fuel Gauge

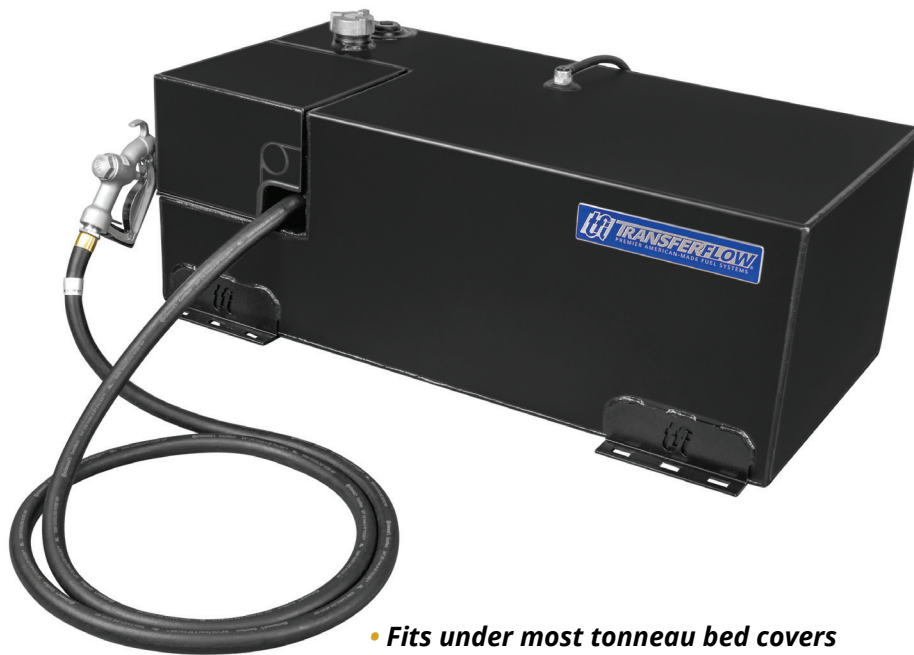
FEATURES & BENEFITS

- Comes with 12-volt GPI® fuel pump, 12 ft. hose, nozzle, fuel cap, wiring harness with cab-mounted power switch, and mounting hardware
- DOT legal for gasoline, diesel, methanol, ethanol, and kerosene
- Built from 12-gauge U.S. aluminized steel for superior durability and strength
- Powder coated black for durable satin finish
- Easy-to-use hose-purge feature eliminates messes
- Pumps up to 15 gallons per minute (8 GPM with 40-gallon refueling tank)
- Baffled to prevent fuel sloshing
- 6-year, unlimited mile warranty



NOTES

- ⊕ Does not fit on 2013—23 Ram short bed with 5th Wheel Prep Package.
- ⊕ 2013—23 Ram Mega Cab and Crew Cab short bed pickups require a Mounting Bracket Kit (part no. 020-01-16790).



• Fits under most tonneau bed covers

40
GALLON
Gasoline
Diesel

**SHORT AND
LONG BED**

Fits: All Light and Heavy Duty Trucks, Jeep Gladiator

Fuel: Gasoline, Diesel, Kerosene

Ship Weight: 190 lb.

Dimensions: 40" L × 23" W × 17 1/8" H

Part Number: 080-01-16206

Optional Fuel Gauge: 070-GA-34240

Note: +



50
GALLON
Gasoline
Diesel

**SHORT AND
LONG BED**

Fits: All Full-Size Trucks

Fuel: Gasoline, Diesel, Kerosene, Methanol/Ethanol

Ship Weight: 206 lb.

Dimensions: 54 3/8" L × 15 1/2" W × 24" H

Part Number: 080-01-09417

Methanol/Ethanol Pump: 080-MP-09417

Optional Fuel Gauge: 070-GA-34241

Notes: + ⚡



82
GALLON
Gasoline
Diesel

SHORT AND LONG BED

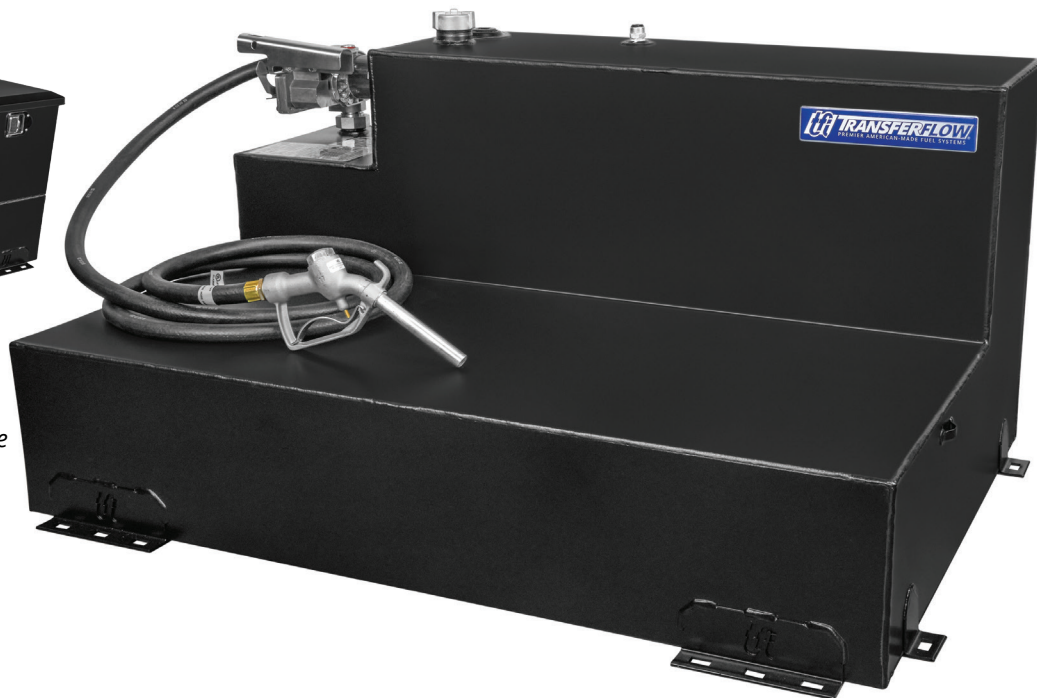
Fits: All Full-Size Trucks
Fuel: Gasoline, Diesel, Kerosene, Methanol/Ethanol
Ship Weight: 251 lb.
Dimensions: 47 3/4" L x 22 5/8" W x 26 5/8" H
Part Number: 080-01-09420
Methanol/Ethanol Pump: 080-MP-09420
Optional Fuel Gauge: 070-GA-34242
Note: +



Optional Tool Box Available!

- 9 cubic feet of storage space
- Locking handles to keep gear secure
- Gas-filled shocks for easy opening and closing
- Easily attaches to Transfer Flow L-shaped refueling tank

Part Number: 060-01-15210



100
GALLON
Gasoline
Diesel

LONG BED

Fits: All Full-Size Trucks
Fuel: Gasoline, Diesel, Kerosene, Methanol/Ethanol
Ship Weight: 329 lb.
Dimensions: 53 3/4" L x 35 7/8" W x 27 5/8" H
Part Number: 080-01-09418
Methanol/Ethanol Pump: 080-MP-09418
Optional Fuel Gauge: 070-GA-34242
Note: +



109
GALLON
Gasoline
Diesel

LONG BED

Fits: All Full-Size Trucks
Fuel: Gasoline, Diesel, Kerosene, Methanol/Ethanol
Ship Weight: 297 lb.
Dimensions: 54 3/4" L x 30" W x 22 5/8" H
Part Number: 080-01-09416
Methanol/Ethanol Pump: 080-MP-09416
Optional Fuel Gauge: 070-GA-34241
Note: +



• Holds two types of fuel

50/50
GALLON
Gasoline
Diesel

**SHORT AND
LONG BED**

Fits: All Full-Size Trucks
Fuel: Gasoline, Diesel, Kerosene, Methanol/Ethanol
Ship Weight: 332 lb.
Dimensions: 47 3/8" L x 31" W x 24 3/8" H
Part Number: 080-01-13244
Methanol/Ethanol Pump: 080-MP-13244
Optional Fuel Gauge: 070-GA-34241
Note: +



50-Gallon Diesel Refueling Tank

The convenience of a diesel fuel station in the bed of your truck.

Fill your fuel needs with a safe, legal, and reliable refueling tank from Transfer Flow! Our diesel refueling tanks are rugged and durability-tested to hold up to daily use.

Transfer Flow's 50- and 80-gallon refueling tanks are legal to carry diesel, a non-combustible fuel. Each tank includes two internal baffles to reduce fuel sloshing and fully-welded mounting brackets.

These refueling tanks are made from 14-gauge U.S. aluminized steel for superior durability and strength, and powder coated black for a durable finish, and come with fuel cap, bolts, nuts, washers, bed shims, and installation instructions. Pumps are sold separately.

OPTIONAL UPGRADES & ACCESSORIES



GPI® 12-Volt
15 GPM Pump Kit
070-FU-34415



Fill-Rite® 12-Volt
15 GPM Pump Kit
070-FU-34417



Husky® Fueling Swivel
070-FS-32685



Killem® Biocide
070-CH-33291



GPI® Fuel Meter
020-01-13959



Tie Down Brackets
020-01-16384



Fuel Filter Kit
020-01-13958



Locking Fuel Cap
070-GC-34074

FEATURES & BENEFITS

- Refueling tank to fuel diesel vehicles and equipment
- Built from 14-gauge U.S. aluminized steel for durability
- Comes with fuel cap, rollover valve, and mounting kit
- Powder coated black for durable finish
- Baffled to prevent fuel sloshing
- 1-year, unlimited mile warranty



NOTES

- + Does not fit on 2013—23 Ram short bed with 5th Wheel Prep Package.

Choose a fuel pump

Our diesel refueling tanks are compatible with GPI® and Fill-Rite® fuel pumps. See part numbers below.





50
GALLON
Diesel

**SHORT AND
LONG BED**

Fits: 6.5' and 8' Truck Beds
Fuel: Diesel
Ship Weight: 140 lb.
Dimensions: 54" L x 15.5" W x 23.1" H
Part Number: 070-TK-34310
Note: +

FUEL PUMP OPTIONS

GPI® Fuel Pump:
070-FU-34415

Fill-Rite® Fuel Pump:
070-FU-34417



80
GALLON
Diesel

**SHORT AND
LONG BED**

Fits: All Full-Size Trucks
Fuel: Diesel
Product Weight: 170 lb.
Dimensions: 47" L x 23" W x 25.75" H
Part Number: 070-TK-34311
Note: +

FUEL PUMP OPTIONS

GPI® Fuel Pump:
070-FU-34415

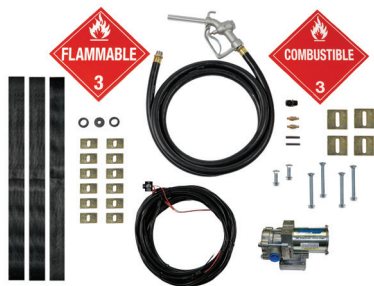
Fill-Rite® Fuel Pump:
070-FU-34417



40-Gallon Refueling Tank and Tool Box Combo

Secure your gear and fuel in a refueling tank and tool box combo.

We've designed a refueling station with room to keep your supplies and gear secure. The tool box is equipped with locking handles and gas-filled shocks that make it easy to open and close.



All fuel systems ship with all parts needed for installation and use.

The 70-gallon refueling tank and tool box combo pairs the popular over-the-rail tool box style with a versatile adjustable design that ensures the tank fits nicely, while our 40-gallon combo sits about flush with most bed rails.

Transfer Flow refueling tank systems are Department of Transportation (DOT) legal to carry and transfer gasoline, diesel, methanol, ethanol, and kerosene, and features an easy-to-use purge function that moves remaining fuel in the hose back into the fuel tank.

FEATURES & BENEFITS

- Comes with 12-volt GPI fuel pump, 12 ft. hose, nozzle, fuel cap, wiring harness with cab-mounted power switch, and mounting hardware
- Easy-to-use hose purge feature eliminates messes
- Pumps up to 8 gallons per minute
- Built from 12- and 14-gauge U.S. aluminized steel for superior durability and strength
- Baffled to prevent fuel sloshing
- Gas-filled shocks for easy opening and closing
- Locking handles to keep gear secure
- 6-year, unlimited mile warranty



NOTES

- ✚ Does not fit on 2013—23 Ram short bed with 5th Wheel Prep Package.
- ✦ Does not fit on 2020—23 Ram short bed pickup.

OPTIONAL UPGRADES & ACCESSORIES



Killlem® Biocide
070-CH-33291

Tie Down Brackets
020-01-16384

Husky® Fueling Swivel
070-FS-32685

GPI® Fuel Meter
020-01-13959



40
GALLON
Gasoline
Diesel

**SHORT AND
LONG BED**

Fits: All Full-Size Trucks
Fuel: Gasoline, Diesel, Kerosene
Ship Weight: 215 lb.
Outside Dimensions: 59" L x 21" W x 21 5/8" H
Inside Dimensions: 59" L x 18" W x 9 3/4" H
Storage Space: 6 cubic feet
Part Number: 080-01-15195
Note: +



• Patented design adjusts to truck bed depth

70
GALLON
Gasoline
Diesel

**SHORT AND
LONG BED**

Fits: All Full-Size Heavy Duty Trucks
Fuel: Gasoline, Diesel, Kerosene
Ship Weight: 293 lb.
Outside Dimensions: 73" L x 24 1/2" W x 23 3/4"-27 3/4" H
Inside Dimensions: 56 3/4" L x 14 1/2" W x 9 1/2"-13 1/2" H
Storage Space: 9 cubic feet
Part Number: 080-01-16230
Note: + ❖



Increase your fuel capacity with a larger replacement fuel tank.

Our high-capacity replacement fuel tank systems nearly double your fuel capacity so you can cruise without worry.



Replacement tanks have internal baffles for extra durability and strength, and to reduce fuel slosh.

Each replacement fuel tank is made from 12-gauge U.S. aluminized steel, and is designed to fit in the same space as the stock fuel tank. Simply remove the plastic stock fuel tank, replace it with our complete fuel system, and you're ready to hit the road.

Our replacement tanks are manufactured with internal baffles to reduce fuel sloshing, and come powder coated for a durable satin black finish.

FEATURES & BENEFITS

- Tank sits above the differential, no skid plate needed
- Fits in the same space as stock fuel tank
- Fuel tank mounts inside the frame rail
- Built from 12- and 14-gauge U.S. aluminized steel for superior durability and strength
- Comes with straps and mounting hardware
- Powder coated with a durable satin black finish
- Baffled to prevent fuel sloshing
- 6-year, unlimited mile warranty



NOTES

- ✦ F-150's equipped with a 23- or 26-gallon stock fuel tank require a replacement sending unit (part no. 070-SE-34254).
- F-150's with a 6 1/2 ft. bed require a Fuel Line Extension Kit (part no. 020-01-17011).
- ➔ This fuel tank is not compatible with an aftermarket utility bed.
- Only fits long bed SuperCabs equipped with a 34-gallon stock tank.
- If vehicle is a passenger or cargo van, a Strap Mounting Kit is required (part no. 020-01-17275).
- ★ If vehicle is a cutaway van, a Strap Mounting Kit is required (part no. 020-01-17295).
- ◆ For 2016—21 model years, this tank will only fit Tundras originally equipped with a 26-gallon stock tank.
- When replacing the aft axle fuel tank with a Transfer Flow midship fuel tank on a Ram cab chassis, an Aft Axle Extension Kit is required (part no. 020-01-13920).
- ✓ When replacing the midship fuel tank on a Ram cab chassis, a Midship Extension Kit is required (part no. 020-01-17286).

FORD PICKUP REPLACEMENT TANKS



5 1/2 & 6 1/2 FT BED
SUPERCREW

Fits: 2018—20 Ford F-150/F-150 Raptor with 3.5L engine
Fuel: Gasoline
Ship Weight: 186 lb.
Dimensions: 88" L × 17 5/8" W × 19" H
Part Number: 080-01-16947
Notes: *○



6 1/2 FT
CREW CAB

Fits: 2020—22 Ford F-250/F-350 with 7.3L engine
Fuel: Gasoline
Ship Weight: 239 lb.
Dimensions: 73 3/5" L × 17" W × 18" H
Part Number: 080-01-17182
Note: →



6 1/2 FT CREW &
8 FT SUPERCAB

Fits: 2017—22 Ford F-250/F-350/F-450
Fuel: Diesel
Ship Weight: 216 lb.
Dimensions: 72 3/4" L × 17" W × 17" H
Part Number: 080-01-16565
Note: ■

FORD TRANSIT 350 VAN REPLACEMENT TANK



148" AND 158"
WHEELBASE

Fits: 2021—23 Ford Transit 350 Van equipped with 3.5L EcoBoost engine and 31-gallon OEM fuel tank
Fuel: Gasoline
Ship Weight: 224 lb.
Dimensions: 91 3/16" L × 12 13/16" W × 14 5/8" H
Part Number: 080-01-17272
Notes: Passenger/Cargo Van (148in WB, >10,000lb GVWR) and Cutaway Van (158in WB, >10,000lb GVWR) ■★



“ I have a Ford F250 with a 7.3L engine and bought the 58-gallon replacement tank to extend my towing range. The team at Transfer Flow were great to work with and they made the installation and purchase experience very easy.”



by CARY W.





TOYOTA TUNDRA REPLACEMENT TANK

46
GALLON
Gasoline

5 1/2, 6 1/2
AND 8 FT BED

Fits: 2007—21 Toyota Tundra Double Cab and CrewMax

Fuel: Gasoline (non Flex Fuel)

Ship Weight: 187 lb.

Dimensions: 77" L x 17 1/4" W x 12 1/2" H

Part Number: 080-01-17298

Notes: ♦

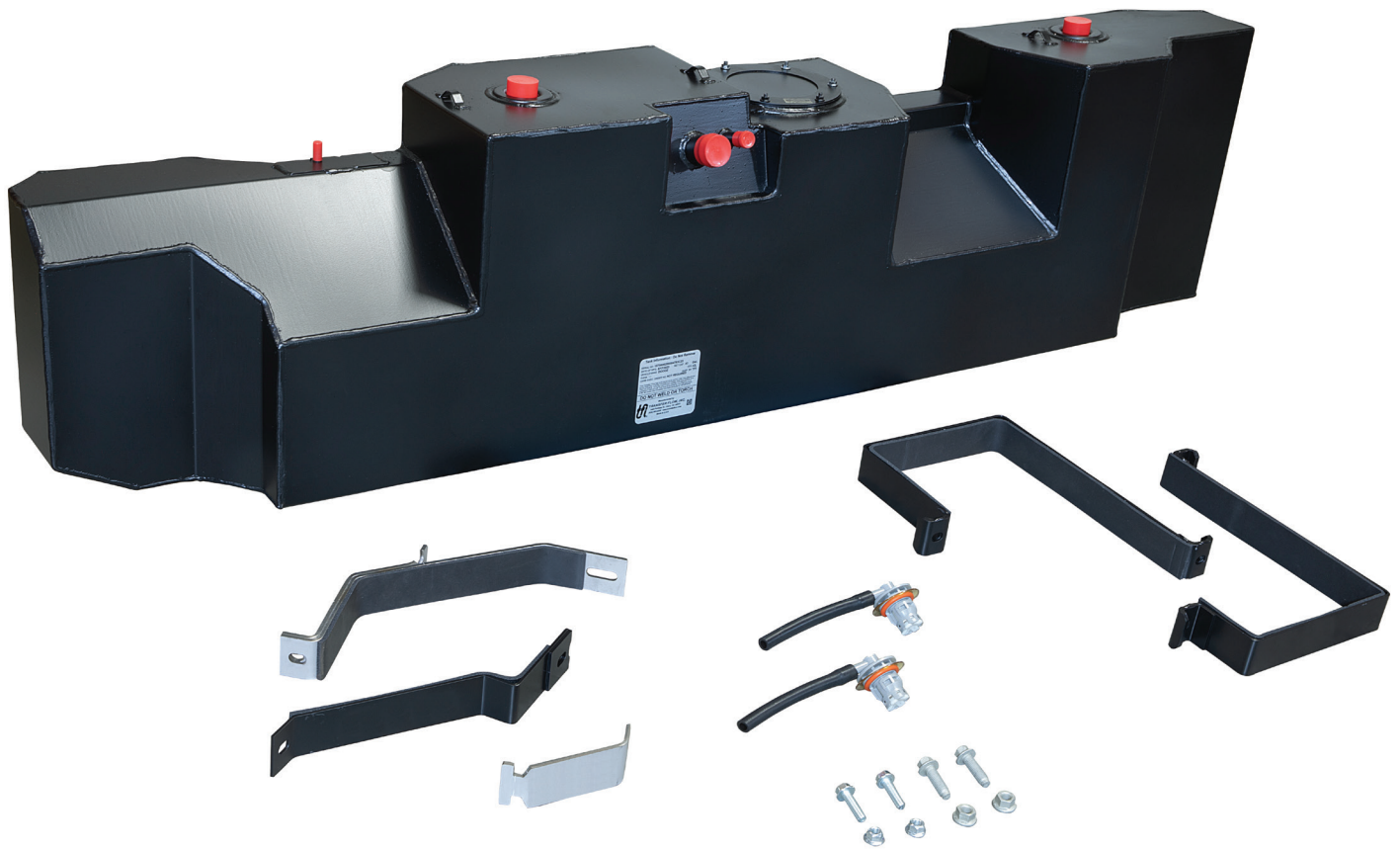
**50-State
Legal for
Gasoline**

/// I installed the 46-gallon tank on my Toyota Tundra and I'm very happy with the quality. I have been a master automotive technician for 36 years and have seen my share of poorly made products. This is not one of them. ///



by JONATHON L.





RAM CAB CHASSIS REPLACEMENT TANKS

40
GALLON
Diesel

60" CAB AXLE

Fits: 2007—23 Ram 3500/4500/5500 Cab Chassis

Fuel: Diesel

Ship Weight: 172 lb.

Dimensions: 74 1/2" L × 11 3/8" W × 17 5/8" H

Part Number: 080-01-15805

Note: Midship Tank replaces OEM midship or aft axle fuel tank ✓

50
GALLON
Diesel

84" CAB AXLE

Fits: 2007—23 Ram 3500/4500/5500 Cab Chassis

Fuel: Diesel

Ship Weight: 199 lb.

Dimensions: 79" L × 11 3/8" W × 18" H

Part Number: 080-01-15807

Note: Midship Tank replaces OEM midship or aft axle fuel tank ✓

50
GALLON
Diesel

108" AND 120" CAB AXLE

Fits: 2007—23 Ram 4500/5500 Cab Chassis

Fuel: Diesel

Ship Weight: 203 lb.

Dimensions: 79" L × 11 3/8" W × 18" H

Part Number: 080-01-15809

Note: Midship Tank replaces OEM midship or aft axle fuel tank ✓

Safety Information



Each Transfer Flow fuel tank system is accompanied by a complete set of instructions. These instructions must be followed with no exceptions.

Always follow State and Federal guidelines for the installation of fuel systems. The following requirements must be followed:

- Do not weld or torch any fuel tank or part
- Always check fuel lines for restrictions or kinks; a restriction or kink can result in either fuel returning to the wrong tank or loss of power when pulling heavy loads
- Always use proper venting procedures (gas cap and/or rollover emissions valves) to prevent over-pressurization of the tank
- Never connect a hot wire with 12 volts directly to the sending unit as this will burn up the sending unit resistor
- Never apply more than 3 psi to any Transfer Flow fuel tank
- Do not install filler necks within 3 feet of any heat source or open flame
- Do not install fuel lines within 3 inches of an exhaust system
- Fuel lines should never be routed on the outside of the vehicle
- Fuel tank information label should never be removed or altered
- Transfer Flow fuel tanks are **NEVER** to be used in conjunction with fuel tanks made by other aftermarket fuel tank manufacturers

Failure to adhere to these requirements will nullify all Transfer Flow warranties and responsibilities.



What is a legal fuel tank?

Federal Motor Vehicle Safety Standards (FMVSS) 301 states that anyone who alters a vehicle must meet or exceed the structural integrity and performance of the OEM fuel system. A fuel system includes anything associated with fuel systems such as the fuel tank, filler neck, fuel lines, fuel pump, emission canister, and fasteners. If someone adds an auxiliary system to a vehicle that reduces the fuel system's performance, he or she has violated FMVSS 301 standards. An example of performance reduction could be if fuel from the original system leaked because the auxiliary system was gravity feeding into the original tank. This creates a safety concern as it not only violates FMVSS 301 regulations but is also a hazardous waste problem.

Transfer Flow fuel tanks are safe, legal, and reliable.

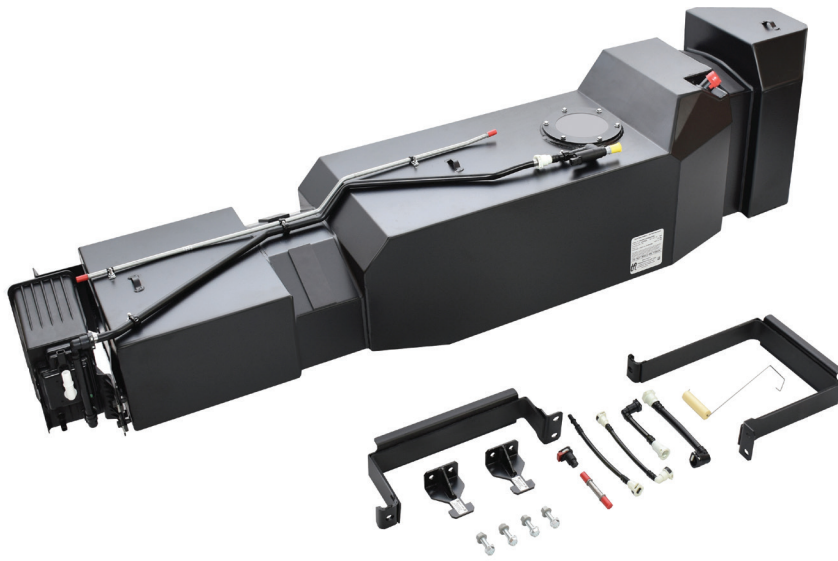
- Fuel tanks are baffled to prevent fuel slosh
- Fuel tanks are pressure tested for leaks
- Meets emissions regulations of the California Air Resources Board, U.S. Department of Transportation, and the Environment Protection Agency
- Meet CARB and EPA fuel fill rates and regulations
- Meet the fastener (strap) regulations specified by the American National Standards Institute (ANSI) and National Fire Protection Association (NFPA) and required by the Recreation Vehicle Industry Association (RVIA)
- Designed using at least 14-gauge aluminized steel
- Liquid-filled fuel tanks are subjected to a 30 ft. drop test

Our refueling tanks meet United States DOT regulations.

The DOT has issued Transfer Flow Special Permit SP-11911 to manufacture and sell refueling tanks to store and transfer gasoline, diesel, ethanol, methanol, and kerosene. Transfer Flow refueling tanks meet or exceed the testing and certification requirements specified in 49 CFR 178.803.

The following guidelines must be adhered to when installing and using a Transfer Flow refueling tank:

- Refueling tanks are designed to be mounted near the head gate in a pickup box, flat bed, or utility box (no other location on the pickup or truck is recommended)
- Transfer Flow refueling tanks must be attended to at all times during loading and unloading by a qualified person as described in 49 CFR 177.834 (i), (3), and (4)
- Refueling tanks must be retested every two years in accordance with 49 CFR 180.352
- Transfer Flow's DOT Special Permit SP-11911 is supplied with every refueling tank, and must be carried aboard each vehicle



/// I'm very happy with my Transfer Flow replacement fuel tank purchase. Ordering was straightforward; shipping was on time and safely packaged; installation instructions were well laid out and thorough. I would not hesitate to repeat this purchase again.///



by VICK B.



/// I came in to get the 40-gallon toolbox fuel tank combo. It's easily the smartest purchase of the year for me. It has made my road trips easier and faster as I don't have frequent stops. I highly recommend one for anyone who travels more than 200 miles a week.///



by JOSH





OF ALL THE RIGHT MOVES



TRANSFERFLOW
PREMIER AMERICAN-MADE FUEL SYSTEMS

CALIFORNIA
1444 Fortress St.,
Chico, CA 95973

TENNESSEE
230 East Wall St.,
Algood, TN 38506

(800) 442-0056 | (530) 893-5209

www.TransferFlow.com